

### Air Handling Unit for VRF

AH\*A025/040/048/080/096GWAA

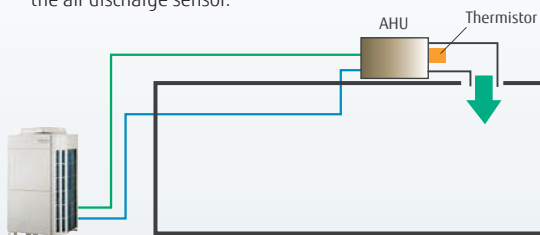
AH\*: AHY(FUJITSU), AHH(GENERAL)

<b>Air Flow range</b> 4,500 to 17,300m <sup>3</sup> /h	<b>Cooling Capacity range</b> 25.0 to 96.0kW
---	---

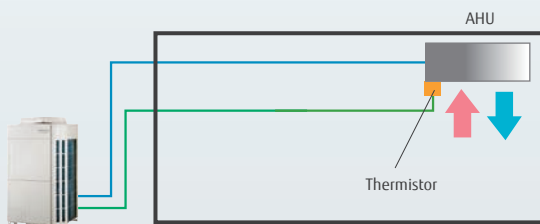
## Different control strategies for optimized control

Point

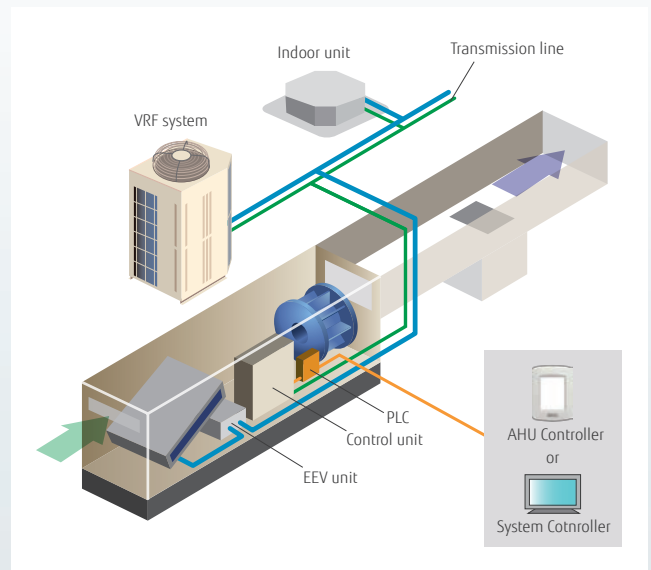
1. The supply air temperature can be controlled by the air discharge sensor.



2. The room temperature can be controlled by the return air temperature sensor.

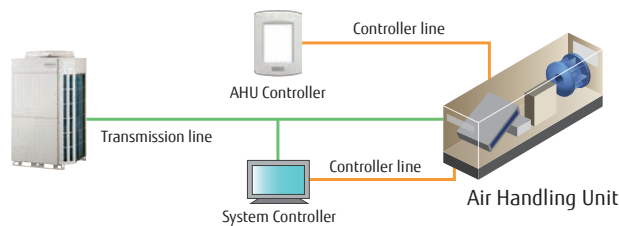


Arrangement as part of a VRF system



Point

### System overview

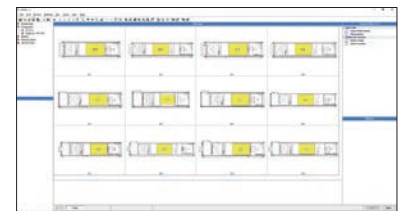


- For AHU control: AHU controller (Only For AHU)
- For mixed connection control: System controller, or 3rd party controller with Modbus convertor
- Only controller(AHU controller or System Controller) can be connected to Air Handling Unit

Point

### Selection software

- Easy to select
- To visualize your own customized AHU



Point

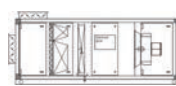
### 5 configurations are available



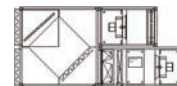
Front inlet type



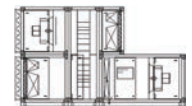
Top inlet type



Mixing Box inlet type



Heat recovery with Cross-flow exchanger

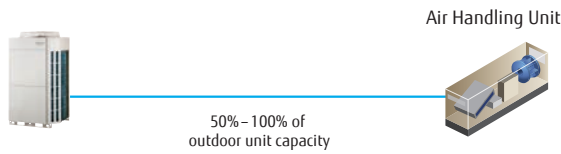


Heat recovery with Heat Wheel

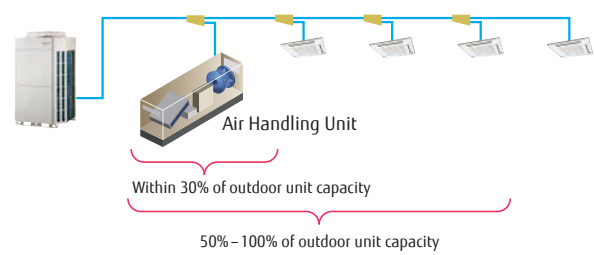
# System overview

- Connectable VRF series : J-III, V-III
- Connectable AHU capacity range: 50 to 100% of the outdoor unit capacity
- Connectable AHU capacity range with indoor units: 30% or less of the outdoor unit capacity

### • Single connection



### • Mixed connection



## Specifications

Model name		AH*A025GWAA	AH*A040GWAA	AH*A048GWAA	AH*A080GWAA	AH*A096GWAA
Air Flow (rated)	m³/h	4,500	7,200	8,600	14,500	17,300
Air Flow (min-max)	m³/h	4,300 to 5,000	5,000 to 8,000	8,100 to 9,100	11,000 to 16,100	16,000 to 18,100
Capacity*1	Cooling	25.0	40.0	48.0	78.0	96.0
	Heating	31.5	45.0	50.0	81.5	100.0
Fan input	kW	2.4	3.4	3.4	7.3	7.3
SFPv	W/(m³/s)	841	795	796	780	832
Sound power level *2		79.1	77.7	79.3	85.4	88.8
		1,154	1,354	1,574	2,074	2,250
Dimension	W	1,064	1,199	1,309	1,544	1,789
	H	2,504	2,634	2,634	3,074	3,074
	L					
Filter class		G4/F7	G4/F7	G4/F7	G4/F7	G4/F7
Operation range (Outdoor temperature)	Cooling	18 to 43	18 to 43	18 to 43	18 to 43	18 to 43
	Heating	-7 to 21	-7 to 21	-7 to 21	-7 to 21	-7 to 21
Connectable outdoor unit capacity range*3	HP	10 to 18	14 to 28	18 to 36	28 to 54	36 to 54
Connectable outdoor unit capacity range*4		34 to 54	48 to 54	-	-	-
Optional controller	System controller : UTY-APGXZ1					
	System Controller Lite : UTY-ALGXZ1 & Central control : UTY-PLGXX2					
	Remote controller : UTY-TXUX					

\*1 Space saving Combination

\*2 Supply Air Unit Outlet

\*3 Single connection

\*4 Mixed connection

AH\*: AHY(FUJITSU), AHH(GENERAL)

## Ancillary module

### Humidifier



### Electrical heater



### Heat recovery (Cross flow)



### Heat recovery (Heat wheel)



Below options are available

- Silencer

- Galvanized metal sheet roof

• Specifications and design are subject to change without notice for further improvement.

• "AIRSTAGE" are worldwide trademarks of FUJITSU GENERAL LIMITED and are registered trademarks in Japan and other countries or areas.

• Other company and product names mentioned herein may be registered trademarks, trademarks or trade names of their respective owners.

• Actual products' colors may be different from the colors shown in this printed material.

Distributed by:

# FUJITSU GENERAL LIMITED

3-3-17, Suenaga, Takatsu-ku, Kawasaki 213-8502, Japan

<https://www.fujitsu-general.com/>

Copyright© 2019 Fujitsu General Limited. All rights reserved. 8NNNP0-1903E